

PRODUCT BROCHURE

03.2026

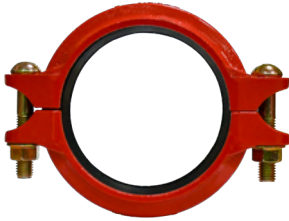


duyar.com



Since 1965

RIGID COUPLING

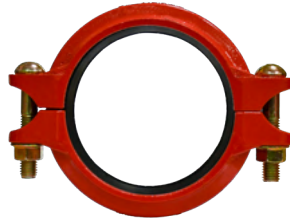


DV 1

DN25 – DN350
1" - 14"
33,7 mm – 355,6 mm



FLEXIBLE COUPLING



DV 2

DN25 – DN350
1" - 14"
33,7 mm – 355,6 mm



REDUCING COUPLING

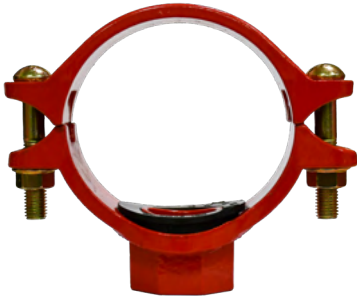


DV 3

DN50 x DN40 - DN200 x DN150
2" x 1 1/2" - 8" x 6"
60,3 mm x 48,3 mm – 219,1 mm x 165,1mm



THREADED OUTLET MECHANICAL



DV 4

DN50 x DN20 to DN200 x DN100
2" x 3/4" to 8" x 4"
60,3 mm x 26,9 mm – 219,1 mm x 114,3 mm



THREADED OUTLET MECHANICAL



DV 5

DN50 x DN15 / 2" x 1/2"
60,3 mm x 21,3 mm
DN65 x DN15 / 2 1/2" x 1/2"
76,1 mm x 21,3 mm



GROOVED OUTLET MECHANICAL TEE



DV 6

DN50 x DN32 - DN200 x DN100
2" x 1 1/4" - 8" x 4"
60,3 mm x 42,4 mm – 219,1 mm x 114,3 mm



U-BOLT MECHANICAL TEE

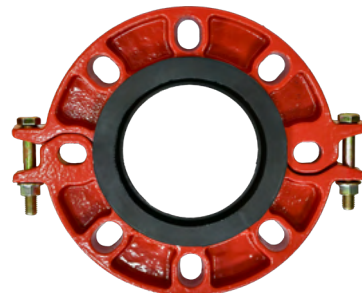


DV 7

DN25 x DN15 - DN80 x DN25
1" x 1/2" to 3" x 1"
33,7 mm x 21,3 mm – 88,9 mm x 33,7 mm



FLANGE ADAPTER



DV 8

DN50 – DN350
2" – 14"
60,3 mm - 355,6 mm



90° ELBOW



DV 9 DV 10

DN25 – DN350
1" – 14"
33,7 mm – 355,6 mm



45° ELBOW



DV 11

DN25 – DN350
1" – 14"
33,7 mm – 355,6 mm



EQUAL TEE



DV 12 DV 13

DN25 – DN350
1" – 14"
33,7 mm – 355,6 mm



GROOVED REDUCING TEE



DV 14

DN50 x DN25 – DN300 x DN250
2" x 1" – 12" x 10"
60,3 mm x 33,7 mm – 323,9 mm x 273,0 mm



CONCENTRIC REDUCER



DV 15

DN32 x DN25 – DN300 x DN250
1 ¼" x 1" – 12" x 10"
42,4 mm x 33,7 mm – 323,9 mm x 273,0 mm



THREADED CONCENTRIC REDUCER



DV 16

DN50 x DN25 – DN100 x DN50
2" x 1" – 4" x 2"
60,3 mm x 33,7 mm – 114,3 mm x 60,3 mm



END CAP



DV 17

DN25 – DN350
1" – 14"
33,7 mm – 355,6 mm



22,5° ELBOW



DV 18

DN25 – DN350
1" – 14"
33,7 mm – 355,6 mm



EQUAL CROSS



DV 19 DV 20

DN32 – DN350
1 ¼" – 14"
42,4 mm – 355,6 mm



PENDENT SPRINKLER



DY-3327 / DY-3427
1/2" K5.6 (80)
Standard Response / Quick Response

DY-3337 / DY-3437
3/4" K8.0 (115)
Standard Response / Quick Response

NPT

Chrome Plated - Raw Brass - White Coated
57, 68, 79, 93, 141 °C (135, 155, 175, 200, 286 °F)

UPRIGHT SPRINKLER



DY-3323 / DY-3423
1/2" K5.6 (80)
Standard Response / Quick Response

DY-3333 / DY-3433
3/4" K8.0 (115)
Standard Response / Quick Response

NPT

Chrome Plated - Raw Brass
57, 68, 79, 93, 141 °C (135, 155, 175, 200, 286 °F)

SIDEWALL SPRINKLER



DY-3329 / DY-3429
1/2" K5.6 (80)
Standard Response / Quick Response

DY-3339 / DY-3439
3/4" K8.0 (115)
Standard Response / Quick Response

NPT

Chrome Plated - Raw Brass - White Coated
57, 68, 79, 93, 141 °C (135, 155, 175, 200, 286 °F)



For Current Sprinkler Certification Status

- Scan QR code
- Visit our website
- Contact us



PENDENT EXTENDED COVERAGE SPRINKLER



DY-3527
1/2" K5.6 (80)
Standard Response

DY-3627
1/2" K5.6 (80)
Quick Response

1/2" NPT

Chrome Plated - Raw Brass - White Coated
57, 68, 79 °C (135, 155, 175 °F)

SIDEWALL EXTENDED COVERAGE SPRINKLER



DY-3529
1/2" K5.6 (80)
Standard Response

DY-3629
1/2" K5.6 (80)
Quick Response

1/2" NPT

Chrome Plated - Raw Brass - White Coated
57, 68, 79 °C (135, 155, 175 °F)

UPRIGHT ESFR SPRINKLER



DY-4333
3/4" K14.0 (200)
Quick Response

3/4" NPT

Raw Brass
68 79 93 °C (155, 175, 200 °F)

PENDENT ESFR SPRINKLER



DY-4337
3/4" K14.0 (200)
Quick Response

3/4" NPT

Raw Brass
68, 79, 93 °C (155, 175, 200 °F)

1" ESFR SPRINKLER



DY-4363
1" K25.2 (360)
Quick Response

1" NPT

Raw Brass
74 °C (165 °F)

1" ESFR SPRINKLER



DY-4357
1" K22.4 (320)
Pendent ESFR Sprinkler

DY-4353
1" K22.4 (320)
Upright ESFR Sprinkler

DY-4359
1" K22.4 (320)
Sidewall ESFR Sprinkler

Quick Response

1" NPT

Raw Brass
74 °C (165 °F)

UPRIGHT ELO SPRINKLER



DY-5333
3/4" K11.2 (160)
Standard Response

DY-5433
3/4" K11.2 (160)
Quick Response

3/4" NPT

Raw Brass - Chrome Plated
57 °C (135 °F), 68 °C (155 °F), 79 °C (175 °F),
93 °C (200 °F), 141 °C (286 °F)

PENDENT ELO SPRINKLER



DY-5337
3/4" K11.2 (160)
Standard Response

DY-5437
3/4" K11.2 (160)
Quick Response

3/4" NPT

Raw Brass - Chrome Plated - White Coated
57 °C (135 °F), 68 °C (155 °F), 79 °C (175 °F),
93 °C (200 °F), 141 °C (286 °F)

UPRIGHT SPRINKLER DRY BARREL



DY-6333
1/2"

Standard Response

DY-6433
1/2"

Quick Response

1/2" NPT

57 °C (135 °F), 68 °C (155 °F), 79 °C (175 °F),
93 °C (200 °F), 141 °C (286 °F)

PENDENT SPRINKLER DRY BARREL



DY-6337
1/2"

Standard Response

DY-6437
1/2"

Quick Response

1/2" NPT

57 °C (135 °F), 68 °C (155 °F), 79 °C (175 °F),
93 °C (200 °F), 141 °C (286 °F)

SIDEWALL SPRINKLER DRY BARREL



DY-6339
1/2"

Standard Response

DY-6439
1/2"

Quick Response

1/2" NPT

57 °C (135 °F), 68 °C (155 °F), 79 °C (175 °F),
93 °C (200 °F), 141 °C (286 °F)

CONCEALED SPRINKLER



DU-3428
Pendent

Quick Response

1/2" NPT

Brass
68 °C (155 °F)

CONCEALED SPRINKLER



DY-3428
Pendent

Quick Response

1/2" NPT

Brass
68 °C (155 °F)

DY-3430
Sidewall

SPRINKLER ACCESSORIES



DY-3300
Escutcheons

Chrome & White
Used for
1/2" and 3/4" NPT
Chrome Plated,
White Coated



DY-3003
Sprinkler
Wrench

1/2" ve 3/4"
Upright, Sidewall,
Pendent



DY-3003-2
Concealed Sprinkler
Sprinkler Wrench

1/2" and 3/4"
Sidewall, Pendent

WET ALARM VALVE



Y-4010
Ductile Iron

DN 65 .. 200
300 Psi (20,6 Bar)
Flanged
Trim Set + Retard Chamber
+ Pressure Switch + Gong Included

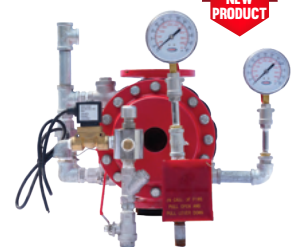
DRY ALARM VALVE



Y-4015
Dry Alarm Valve
Accelerator

DN 100-150-200
300 Psi (20,6 Bar)
Flanged
Trim Set + Pressure Switch
+ Gong Included

DELUGE ALARM VALVE



GY46X-300
Ductile Iron

DN 50-200
300 Psi (20,6 Bar)
Flanged Connection
Electrically Activated
+ External reset
Brand: APC

**PRE-ACTION
ALARM VALVE SET**



Y-4120
Ductile Iron

DN 100 | PN 21
Trim Set Semi Assembled

OS&Y GATE VALVE



T-1425 | Y-4040
Ductile Iron

T-1425
DN 65 .. 200
175 Psi (12,1 Bar)
Flanged

Y-4040
DN 65 .. 200
300 Psi (20,6 Bar)
Flanged

OS&Y GATE VALVE



Y-4045
Ductile Iron

DN 250-300
300 Psi (20,6 Bar)
Flanged - Resilient Seated

**DUYAR SUPERVISORY SWITCH
FOR OS&Y GATE VALVES**



DOSY-2 OS&Y
Supervisory Switch

DN 65-300
OS&Y Supervisory Switch

NON-RISING STEM GATE VALVE



T-1436
Ductile Iron

DN 65 .. 200
175 Psi (12,1 Bar)
Flanged



Y-4055
Ductile Iron

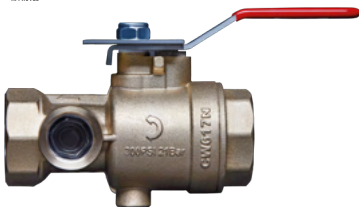
DN 250 - 300
300 Psi (20,6 Bar)
Flanged



POST 1
Post Indicator

2 1/2" .. 12"
Vertical Type
250 Psi (17,2 Bar)

TEST AND DRAIN VALVE



Y-4030 | Brass

1/2" Orifice
K5.6 (80)

1 7/32" Orifice
K8.0 (115)

1", 1 1/4", 1 1/2", 2"
NPT, BSP, NPS, ISO 228/1
300 Psi (21 Bar)
Threaded

INDICATING BUTTERFLY VALVE



Y-4020
Ductile Iron

DN 50 .. 200
300 Psi (20,6 Bar)
Wafer Type



Y-4021
Ductile Iron

DN 250 - 300
300 Psi (20,6 Bar)
Wafer Tip



Y-4025
Ductile Iron
USA Norm

Y-4025-1
Ductile Iron
EU Norm

DN 50 .. 200
300 Psi (20,6 Bar)
Grooved Type

FIRE SWING CHECK VALVE



Y-5065
Ductile Iron

DN 50 .. 200
300 Psi (20,6 Bar)
Grooved

DUAL PLATE CHECK VALVE



Y-4065
Ductile Iron

DN 50 .. 250
300 Psi (20,6 Bar)
Clapper: Stainless Steel



T-0330
Ductile Iron

DN 50 .. 600 | PN 16
Clapper: Stainless Steel

RISER MANIFOLD



Y-4070
Grooved
Riser Manifold
Ductile Iron

2", 2 1/2", 3", 4", 6"
300 Psi (20,6 Bar)

*Please ask for integrated automatic relief valve option.

RISER MANIFOLD SIZE	TEST & DRAIN VALVE SIZE
2"	1" NPT
2 1/2", 3"	1 1/4" NPT
4", 6"	2" NPT

FIRE FIGHTING 2 WAY INLET



Y-3006
Brass

4" X 2 1/2" X 2 1/2"
300 Psi (20,6 Bar)
BSPT
+ Coupling + Cover
Included
-Distillings Excluded
Brand: Duyar / N.H.

LANDING VALVE



Y-3007
Brass

2", 2 1/2"
PN 16 Max. Working
Pressure
* BSP Threaded Storz
Coupling is included.
Coupling + bonnet
sold seperately.



Y-3009
Brass

4" X 2 1/2" X 2 1/2"
300 Psi (20,6 Bar)
NPT Threaded
Coupling + bonnet
sold seperately.

FLOWMETER



GVI

3" .. 8"
500 Psi (34,5 Bar)
S Type
Welding Neck
Brand: Global Vision



DFM

2" .. 8"
500 Psi (34,5 Bar)
S Type
Welding Neck / Grooved
Brand: Duyar

*FM certificate is available for DN 100
450 GPM and DN 150 1250 GPM.

SWITCHES



DPS10-1
Alarm
Pressure Switch

1/2"
300 Psi (21 Bar)



Y-3003
Flow
Switch

2" .. 8"
DN50 - DN200
450 Psi (31Bar)



Y-3002
Flow Switch
Threaded

1" .. 2"
300 Psi (21Bar)

OVERGROUND FIRE HYDRANT



T-1720
Hydrant
Cast Iron

DN 80 | PN 16

T-1720
Hydrant
Cast Iron

OVERGROUND FIRE HYDRANT



T-1755
Hydrant

Steel + Cast Iron

1180 L

T-1765
Hydrant

Steel + Cast Iron

1750 L

T-1775
Hydrant

Steel + Cast Iron

2040 L

T-1785
Hydrant

Steel + Cast Iron

2470 L

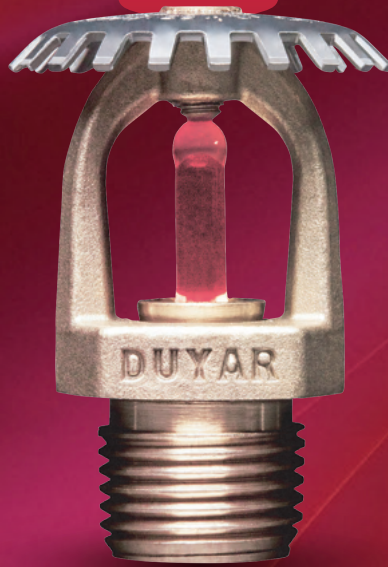
T-1760
Elbow

Ductile Iron

DN 100 | PN 16

DUYAR PROUDLY PRESENTS!

Our compliance with international standards has been certified with **CE certificate**.



| Sprinkler



| Flow Switch



| Dry Alarm Valve



| Overground Fire Hydrant

The A.R.T. of Flow



@duyaryana



Since 1965

PRESSURE REGULATORS



Y-7010
Relief Valve
(T type)
Ductile Iron

Y-7000
Pressure Reducer Valve
(T type)
Ductile Iron

2" .. 8"
250 Psi (17,2 Bar)
Flanged PN 16
Copper Piping

Please ask for;
DIN PN 25, ANSI Sinifi 150, 300 Flanged

PRESSURE REGULATORS



ZSJF
Pressure Reducer Valve
Flanged
Ductile Iron

3" - 4" - 6"
DN 80, DN 100, DN 150 | PN 16
365 Psi (25 Bar)
Brand: YQ Valves

PRESSURE REGULATORS



Y-7015
Relief Valve
(Y type)
Ductile Iron

Y-7005
Pressure Reducer Valve
(Y type)
Ductile Iron

DN 50 .. 200 | PN 16 DN 50 .. 200 | PN 16

THERMOSTATIC MIXING VALVE



T-2310 | Brass

¾", 1", 1 ¼", 1 ½"
PN10
Anti-Scalding Feature

Fitting Kit With Non-Return Valve
¾"-½", 1"-¾", 1 ¼"-1"

STATIC BALANCING VALVE



T-2015 | Brass

½", ¾", 1", 1 ¼", 1 ½", 2"
PN 16
Threaded

STATIC BALANCING VALVE



T-3020 | Cast Iron

DN 40 .. 300 | PN 16
Variable Orifice
Disc: Ductile Iron + Rubber
Coated
Flanged

STATIC BALANCING VALVE



T-3025 | Ductile Iron

1 ½" .. 12"
235 Psi (16 Bar)
Disc: Ductile Iron + Rubber Coated
Grooved

STATIC BALANCING VALVE



T-3027 | Ductile Iron

1 ½" .. 12" | Class 125
235 Psi (16 Bar)
Disc: Ductile Iron + Rubber Coated
ANSI Flanged

BALANCING DEVICE SET



T-4095

Flow Meter + Hand Held Computer
+ Probes

BALL VALVE | FLANGED



T-0520 Cast Iron (F4)
T-0525 Ductile Iron (F4)

DN 15 .. 100 | PN 16
Full Bore

BALL VALVE | FLANGED



T-0530
Ductile Iron

DN 15 .. 250 | PN 16
Full Bore
3-Piece

* Reducing type.
DN150, DN200, and DN250 sizes are made of Cast Iron

BALL VALVE | FLANGED



T-0540 Cast Iron (F5)
T-0545 Ductile Iron (F5)

DN 125 .. 300* | PN 16
Full Bore

*DN300 nominal size is of reducing type.

BALL VALVE | THREADED



T-0560 | Ductile Iron

1 1/2" .. 12" | PN 16

KNIFE GATE VALVE



T-1470 | Ductile Iron

DN 50 .. DN 600
PN 10

RESILIENT SEATED GATE VALVE | F4



T-1435 | Ductile Iron

DN 40 .. 600 | PN 16
Flanged

SURFACE BOX



T-1370 | Cast Iron

DN 40 .. 600 | PN 16

BALL VALVE | LUG TYPE



CDY-1030 | Ductile Iron

DN 50 .. 200 | PN 16

GLOB VALVE



T-0120
Ductile Iron

DN 15 .. 200 | PN 16
DN 250 - 300 | PN 10
Flanged
Disc: AISI 420 SS (DN 15 .. 100)
ST37 + Stainless Steel (DN 125 .. 300)

WAFFER BUTTERFLY VALVE | PN 25



T-1130 | Ductile Iron

DN 65 .. 200 | PN 25
Disc: Ductile Iron, Rubber Coated
Face Gasket: EPDM

WAFFER BUTTERFLY VALVE



**T-0910
Ductile Iron**

DN 40 .. 450* / PN 16
Disc: Ductile Iron,
Nickel Plated
Seat: EPDM

*DN 40 .. 200 With Lever
*DN 250 .. 600 With Gear Box



**T-0930
Ductile Iron**

DN 40 .. 450* / PN 16
Disc: Stainless Steel
(CF8)
Seat: EPDM

LUG BUTTERFLY VALVE



**T-1010
Ductile Iron**

DN 40 .. 500* | PN 16
Disc: Ductile Iron,
Nickel Plated
Seat: EPDM



**T-1030
Ductile Iron**

DN 40 .. 600* | PN 16
Disc: Stainless Steel
(CF8)
Seat: EPDM

*DN 40 .. 200 With Lever
*DN 250 .. 600 With Gear Box
*DN600 size is stainless steel clapper.

GROOVE BUTTERFLY VALVE



T-1150 | Ductile Iron

DN 50 .. 200 | 300 Psi (21 bar)
Clapper: Ductile Iron + EPDM / NBR
Grooved Ends: ANSI AWWA C606

BUTTERFLY VALVE GEAR BOXES



**T-1210
Cast Iron**

DN 40 .. 600

METAL BELLOWS EXPANSION JOINTS WITH LIMITING ROD



T-1825 | Ductile Iron

DN 25 .. 300 | PN 16
Flanged

RUBBER EXPANSION JOINT



**T-1810
Ductile Iron**

DN 25 .. 300* | PN 16
Flanges: Ductile Iron
+ Zinc Galvanized
Joint: Corded Rubber

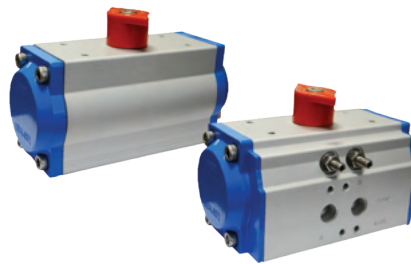
*DN 350 .. 600
Flanges: St 37 Steel
+ Zinc Galvanized



**T-1815
Cast Iron**

DN 15 .. 80 | PN 16
Body: Rubber
Joint: Cast Iron
Ring: Carbon Steel

PNEUMATIC ACTUATORS



T-1220

Torque Range: 18Nm - 13.673Nm
Preload Spring
Single Acting Spring Return Pneumatic Actuators &
Double Acting Pneumatic Actuator

ELECTRIC ACTUATORS



T-1240

Torque Range: 30Nm - 2.000Nm
0° - 90°
24VDC - 220VAC

**STAINLESS STRAINER
THREADED**



NEW PRODUCT

**T-1670
Stainless Body**

½", ¾", 1", 1 ¼", 1 ½", 2"
PN 40
Threaded

**STAINLESS BALL VALVE
THREADED**



NEW PRODUCT

**T-1660
Stainless Body**

½", ¾", 1", 1 ¼", 1 ½", 2"
PN 63
Threaded
(Lockable)

THERMODYNAMIC TRAP



NEW PRODUCT

T-1640 | Stainless Body

½", ¾", 1" | PN 40
Threaded

INVERTED BUCKET STEAM TRAP

CE EAC
CE 1922



T-1610 | Cast Iron

DN 15 .. 50 | PN 16
Flanged
Bucket: AISI 304 SS

T-1620 | Cast Iron

DN 15 .. 50 | PN 16
Threaded
Bucket: AISI 304 SS

STEAM TRAP



T-1630 | Ductile Iron

½", ¾" .. 1" | PN 16
Threaded

T-1635 | Ductile Iron

DN 15 .. 50 | PN 16
Flanged

LIFT CHECK VALVE

TSE CE EAC
CE 1922



T-0260 | Ductile Iron

DN 15 .. 200 | PN 16
DN 250 .. 300 | PN 10
Flanged

SWING CHECK VALVE

TSE CE EAC
CE 1922



T-0410 | Cast Iron

DN 40 .. 250 | PN 16
Flanged

T-0420 | Ductile Iron

DN 40 .. 350 | PN 16
Flanged

Mil: AISI 420 SS
Disc: Ductile Iron + Rubber Coated

SWING CHECK VALVE



NEW PRODUCT

**T-0440
Cast
Carbon Steel**

DN 40 .. 300 | PN 16
Clapper: Stainless Steel

DISC CHECK VALVE

TSE CE EAC
CE 1922



T-0310 | Brass

DN 15 .. 100 | PN 16
Disc: AISI 304 SS
Spring: AISI 302 SS

DISC CHECK VALVE



T-0320 | Ductile Iron

DN 40 .. 200 | PN 16
Disc : Ductile Iron
Spring: AISI 302 SS

DN 40-100 sizes are equipped with a stainless steel clapper

DUAL PLATE CHECK VALVE



**T-0330
Ductile Iron**

DN 40 .. 600 | PN 16
Clapper: Stainless Steel

FULL LIFT SAFETY VALVE (SPRING)



**T-1510
Cast Iron**

**T-1515
Ductile Iron**

DN 25 .. 100 | PN 16
Flanged (Corner Type)
Spring&Seat: Stainless Steel
Disc&Stem: Stainless Steel

Full Lift

PROPORTIONAL LIFT SAFETY VALVE (SPRING)



**T-1530
Ductile Iron**

DN 25 .. 100 | PN 16
Flanged (Corner Type)
Spring&Seat: Stainless Steel
Disc&Stem: Stainless Steel

Proportional Lift

METAL BELLOWS VALVE



**T-0180
Ductile Iron**

DN 15 .. 200 | PN 16
Flanged

**T-0170
Cast Steel**

DN 15 .. 250 | PN 40
Flanged

Y TYPE STRAINER



**T-0820
Cast Iron**

DN 15 .. 600* | PN 16
Flanged
Filter: AISI 304 SS

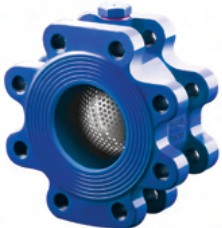
* DN 150 .. 600
Ductile Iron

**T-0830
Ductile Iron**

DN 15 .. 600* | PN 16
Flanged
Filter: AISI 304 SS

* DN 150 .. 600
Ductile Iron

STRAIGHT TYPE STRAINER | LUG



**CVT-1010
Ductile Iron**

DN 65 .. 400 | PN 16
Filter: AISI 304 L SS

BRASS Y TYPE STRAINER



T-2220 | Brass

½" .. 3" | PN 16
Threaded
O-Ring: EPDM
Filter: AISI 304 SS

BRASS CHECK VALVE WITH SPRING



T-2210 | Brass

½" .. 2 ½" | PN 16
Threaded

BRASS BALL VALVE

ERC



T-2110 | Brass

½" .. 2" | PN 25
2 ½" .. 4" | PN 16
Threaded
Full Bore

BRASS BALL VALVE WITH BUTTERFLY LEVER

ERC



T-2120 | Brass

DN 15 .. 25 | PN 25
Threaded

BRASS BALL VALVE WITH STEM EXTENTION

ERC



T-2130 | Brass

DN 15 .. 50 | PN 25
Threaded

MINI BALL VALVE

ERC



T-2160 | Brass

DN 15 | PN 16

BRASS THREADED SAFETY RELIEF VALVE



litap

T-2340 | Nickel-Plated Brass

½" .. 1"
Threaded
Spring: Stainless Steel

Opening Pressure: 3-4-6 Bar

PRESSURE REDUCING VALVE



litap

T-2330 | Nickel-Plated Brass

½" .. 4"
Threaded

ITAP MANOMETER



litap

T-2335 | ABS

¼"
Bottom Connection (0-6 Bar)
Back Connection (0-6 Bar)

AUTOMATIC FILLING UNIT



litap

T-2350 | Brass

½" DN15 | PN 16
Threaded

AUTOMATIC AIR VENT

ERC



litap

T-2360 | Brass

½" | PN 10

*Includes shut-off valve.

Rising Brand in The **STEAM GROUP!**



Metal Bellows Sealed Globe Valve



Lift Check Valve



Stainless Ball Valve With Threaded



Globe Valve



Thermodynamics Trap



Stainless Swing Check Valve With Threaded



Inverted Bucket Steam Trap



Stainless Strainer With Threaded



Steam Trap Flanged

The A.R.T. of Flow



@duyarvana



DUYAR 
Since 1965

THE BOSPHORUS
IS OUR HOME.

THE A.R.T. OF FLOW IS IN OUR DNA.

Duyar valves and fire protection products are being engineered and manufactured in Istanbul by passionate engineers & technicians for more than 60 years.

● ACCESSIBLE

We are always open to communicate, share our know-how and ease the design and construction processes for our clients.

● RESPONSIVE

We love to work together and cooperate with our clients to enable their lean construction efforts.

● TRUSTED

With our available stock in the United States, after sales service and 2 years warranty, we dedicate ourselves to be a reliable partner for our clients.

Since 1965

UL, FM, CE, TSE,
TSEK, GOST
certification



In-house
R&D and
innovation lab

Stock available
in the world



Iron casting
with in-house
foundry

2 years warranty
& product liability
insurance



A MEMBER OF:



DUYAR
Since 1965

HEADQUARTER & MAIN FACTORY

Osmangazi Mh. 2653 Sk. No:7 34522 Esenyurt / İstanbul / Türkiye

Phone: +90 212 668 1808 (pbx) Fax: +90 212 355 0747 E-mail: sales@duyar.com



BROCHURE DUYARVANA

www.duyar.com